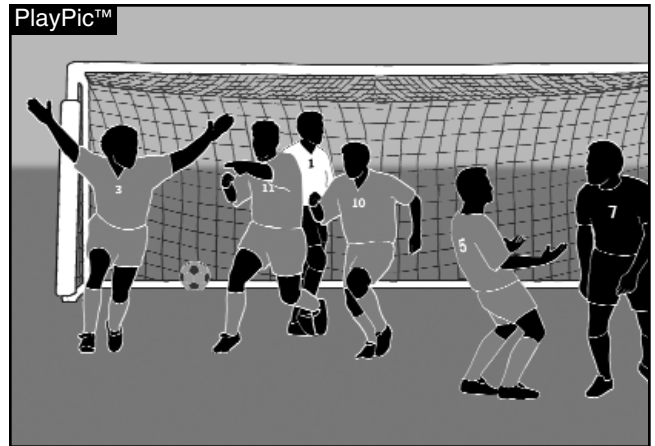

OFFICIALS QUIZ



Soccer 2006



In each of the following, you are given a situation and at least two possible answers. You are to decide which answer or answers are correct for FIFA, NFHS or NCAA rules, which might vary. (Answers appear on page 4)

- At the taking of a throw-in, A9 throws the ball directly to A1 (goalkeeper), who handles the ball within team A's penalty area. The referee should:
 - Allow play to continue.
 - Award a penalty kick to team B.
 - Award an indirect free kick to team B.
 - Award a throw-in to team A (retake).
 - Award a throw-in to team B.
- The following statements all pertain to goalkeeper possession and the ability of an opponent to play the ball while these actions take place. Which are legal for opponents to do?
 - An opponent may play the ball while a goalkeeper bounces the ball on the ground.
 - An opponent heads the ball while the goalkeeper has the ball lying on his open palm.
 - An opponent kicks the ball after the goalkeeper has thrown the ball upward into the air and allowed it to bounce.
- The assistant coach from team A leaves the team area to yell instructions to the team.
 - There is no offense.
 - The referee shall caution the assistant coach for unsporting conduct.
 - The referee shall caution the assistant coach for dissent.
 - Because it is the assistant coach, the referee shall dismiss the assistant coach.
 - The referee shall first warn team A, and upon repetition, caution the assistant coach.
 - Coaches and other non-playing bench personnel cannot be shown a misconduct card, but the referee should inform the assistant coach that the irresponsible behavior will be reported.
- There are several requirements for a legal corner kick. Choose all that apply.
 - The goalkeeper may not take a corner kick.
 - At least a portion of the ball must be within the corner arc.
 - To gain access to the ball, players may temporarily move the corner flag as long as they replace it immediately.
 - Opponents must remain 10 yards from the ball until the ball is in play.
 - The ball is in play when it is kicked and moves.
 - The kicker may touch the ball a second time before another player touches it.
- A9, in an offside position, realizes that and steps off the field of play to show non-involvement with play. A4 scores a goal. The referee should:
 - Award the goal to team A.
 - Caution A9 and restart with an indirect free kick to team B.
 - Send off A9 and restart with a direct free kick to team B.
 - Restart the game with a dropped ball.

6. Team B substitutes are at the scorer's table when team A is awarded a corner kick. Team A substitutes.
- The substitutes of team B are permitted to enter.
 - The substitutes of team B are not permitted to enter.
 - The substitutes of team B are permitted to enter if the coach of team A permits it.
 - Local youth modifications to the Laws may require team B to wait for another substitution opportunity.
7. The referee applies advantage after A4 kicks B10. The anticipated advantage does not ensue at that time. The referee:
- Must allow play to continue.
 - Should stop play and award an indirect free kick to team B.
 - Should stop play and award a direct free kick to team B.
8. In a match, team A has 11 players while team B has only seven players. In the 50th minute, B7 sprains his ankle and needs treatment. What should the referee do?
- Abandon the match immediately.
 - Suspend the match while B7 receives treatment.
 - If B7 cannot return to the match, abandon the match.
 - Allow play to continue while B7 receives treatment.
9. When inspecting the game balls, the official determines that the home team has only one satisfactory game ball.
- The game may not be started.
 - The home team must purchase another ball before the contest may begin.
 - The official may choose two additional game balls offered by the opposing team.
 - The game can be played with the single ball.
10. While inspecting the field prior to the match, the referee finds that unsecured portable goals are to be used. The referee should:
- Allow the game to proceed, informing the home team that it is responsible if an injury occurs as a result of the goal falling on a player.
 - Allow the game to proceed if it is not too windy and the risk of the goal falling on a player is minimal.
 - Allow the game to proceed only if both teams agree.
 - Not allow the game to proceed, as portable goals must be securely anchored to the ground.
11. B3 steps off the field of play in order to place A2 in an offside position. A2 scores a goal after the ball was played forward by A7. The referee should:
- Award the goal to team A and caution B3.
 - Award the goal to team A with no additional action.
 - Judge A2 offside and award an indirect free kick to team B.
12. During dynamic play near the touchline, the referee notes that A9 is running outside the field of play and is playing the ball, which is inside the field of play.
- There is no infraction, continue playing.
 - The referee should award a throw-in to team B.
 - The referee should award an indirect free kick to team B.
13. The first half ends. As the players are returning to their benches for the break, A3 pushes B9 hard, knocking B9 to the ground. The referee decides that act was unsporting.
- Because it is halftime, the referee can take no action.
 - The referee cautions A3 but does not display the card.
 - The referee cautions A3 and displays the yellow card.
 - The referee can take no action, but informs both coaches of the misconduct.

14. The same as question 13, except that A3 pushes B9 very hard, knocking B9 to the ground some six feet from where he was standing before the push. The referee decides the act used excessive force.
- Because it is halftime, the referee can take no action.
 - The referee sends off A3 but does not display the card.
 - The referee sends off A3 and displays the red card.
 - The referee can take no action, but informs both coaches of the misconduct.
 - Team A will start the second half with 10 players.
 - Team A will start the second half with 11 players.
15. A8 takes a throw-in toward team B's goal. The ball deflects off the crossbar, hits goalkeeper B1 and goes into the goal.
- A8 may not score directly off a throw-in.
 - Since the ball struck B1, it no longer meets the definition of "directly."
 - The referee shall award a goal.
 - The referee shall award a goalkick.
 - Since B1 did not intentionally touch the ball, no goal can be awarded.
16. The visiting coach states that the penalty area appears too small. Upon measuring, the referee finds that the lines enclosing the penalty area are 16 yards from the goalline and from the goalposts. The correct action is to:
- Do nothing, the lines are correct.
 - Inform the home team coach of the error, then play the game using the lines as marked.
 - Inform the visiting coach that the lines have been made smaller because the overall field is smaller.
 - Inform the goalkeepers that since the penalty area is incorrectly marked they may handle the ball within an appropriate distance outside the penalty area.
 - The game shall not begin and the referee shall file a report.
17. Player A6 takes a throw-in. The referee decides two things about that throw-in. The ball never entered the field of play. A6 did not throw the ball from over and behind his head.
- A6 must retake the throw-in because it did not enter the field of play.
 - Any team A player may retake the throw-in because it did not enter the field of play.
 - Caution A6 because his throw-in did not enter the field of play.
 - Award a throw-in to team B because the ball did not enter the field of play.
 - Award a throw-in to team B because of A6's throw-in infraction.
18. A7 puts her hands on B3's shoulders in an effort to gain leverage to win an air ball. There is no advantage for B3 or any team B player.
- The referee awards an indirect free kick to team B.
 - The referee awards a direct free kick to team B.
 - The referee red cards A7 for serious foul play.
 - The referee yellow cards A7 for unsporting behavior.
19. A6 was cautioned in the first half for dissent. Now, in the 60th minute, A6 is guilty of unsporting conduct.
- Red card only (send off, disqualification or ejection).
 - Yellow card only (caution).
 - Yellow card and then a red card.
 - Yellow and red displayed together.
 - Team must play a player short.
 - Team is not required to play a player short.
20. The referee inadvertently sounds the whistle. Realizing the error, the referee:
- Verbally directs "play on" to the players to continue play.
 - Conducts a dropped ball.
 - Gives the team in possession an indirect free kick.

ANSWERS:

- 1 – All – c (FIFA 15; NFHS 12-7-4; NCAA 15-3)
- 2 – All – c (FIFA 12, FIFA Q&A 12.17, FIFA Q&A 12.18; NFHS 12-7-1, 12.7.1 Situation; NCAA 12-7, 12-10 AR 107)
- 3 – FIFA – f (5, 12, The Technical Area); NFHS – b (1-5-3 Penalty; 12-8-1f 1); NCAA – b (1-12a, 12-14e)
- 4 – All – b, d, e (FIFA 17; NFHS 17-1-2, 17-1-3; NCAA 17-2)
- 5 – All – a (FIFA 11; NFHS 11-1-3; NCAA 11-3 AR 95)
- 6 – FIFA – a, d (3, Notes on the *Laws of the Game* — Modifications); NFHS – a (3-3-4, 3-4-1d); NCAA – a (3-4c, 3-6)
- 7 – All – c (FIFA 5; NFHS 5-3-1d; NCAA 5-3a)
- 8 – All – b, c (FIFA 3, FIFA Q&A 3.25; NFHS 3-1-2 Exception; NCAA 3-1)
- 9 – FIFA – c, d (2); NFHS – c (2-1-1); NCAA – a (2-2 Penalty)
- 10 – All – d (FIFA 1; NFHS 1-4-1; NCAA 1-9)
- 11 – All – a (FIFA 11, 12; NFHS 12-8-1a; NCAA 5-5b AR 53, 11-3 AR 91)
- 12 – All – a (FIFA 9; NFHS 9-1-1, 9-1-2e; NCAA 9-1)
- 13 – All – c (FIFA 5, 12, FIFA Q&A 5.8; NFHS 12-8-1f; NCAA 12-14e)
- 14 – FIFA – c, e (5, 12); NFHS – c, f (12-8-3a, 12.8.3 Situation G); NCAA – c, e (12-15b AR 126, AR 133)
- 15 – All – a, b, c (FIFA 15; NFHS 10-1-1; 10-1-3b, 15-1-1; NCAA 10-1, 10-4b, 15-2)
- 16 – FIFA – b (5); NFHS – b (1.2.6 Situation A); NCAA – e (1-6). Under FIFA, in many instances, this would be considered trifling. Some higher level competitions (youth regionals, professional leagues) might require correction before the game begins (e)
- 17 – FIFA – b (15, FIFA Q&A 15.2); NFHS – d (15-1-5); NCAA – e (15-2 Penalty)
- 18 – All – b, d (FIFA 12; NFHS 12-3-1; NCAA – 12-4; Note: *A ruling dealing with leaning on a teammate's shoulders was in the Laws of the Game prior to the 1997/98 rewrite — Law XII, IBD 4 in the 1993 Laws. The general principle is that any use of an artificial aid to enhance one's skills is unsporting.*)
- 19 – FIFA – c, e (12); NFHS – d, f (12-8-1f, 12-8-2b); NCAA – c, e (12-14e, 12-15h)
- 20 – FIFA – b (5, 8, 9); NFHS – b, c (9-1-2c, 9-2-1c, 9.2.1 Situation); NCAA – b, c (9-2b, 9-3b)



FREE TRIAL ISSUE OF REFEREE MAGAZINE

✓YES! I'd like to sample the next issue of REFEREE – absolutely FREE – and please send me a FREE copy of *Smart Soccer Officiating - How To Get Better Every Game*. If I like my FREE issue I can subscribe at over 46% off the cover price. I'll get a full year (12 issues in all) for just \$44.95.

If after seeing the FREE issue I choose not to subscribe, I will return the invoice marked "Cancel."
The FREE issue and *Smart Soccer Officiating - How To Get Better Every Game* are mine to keep. I'll owe nothing.

Name: _____

Address: _____

City, State, Zip: _____

E-Mail: _____

Mail to: Referee Magazine
PO Box 161
Franksville, WI 53126-0161

Phone: 1-800-733-6100 or visit our website at www.referee.com

QB06SOR